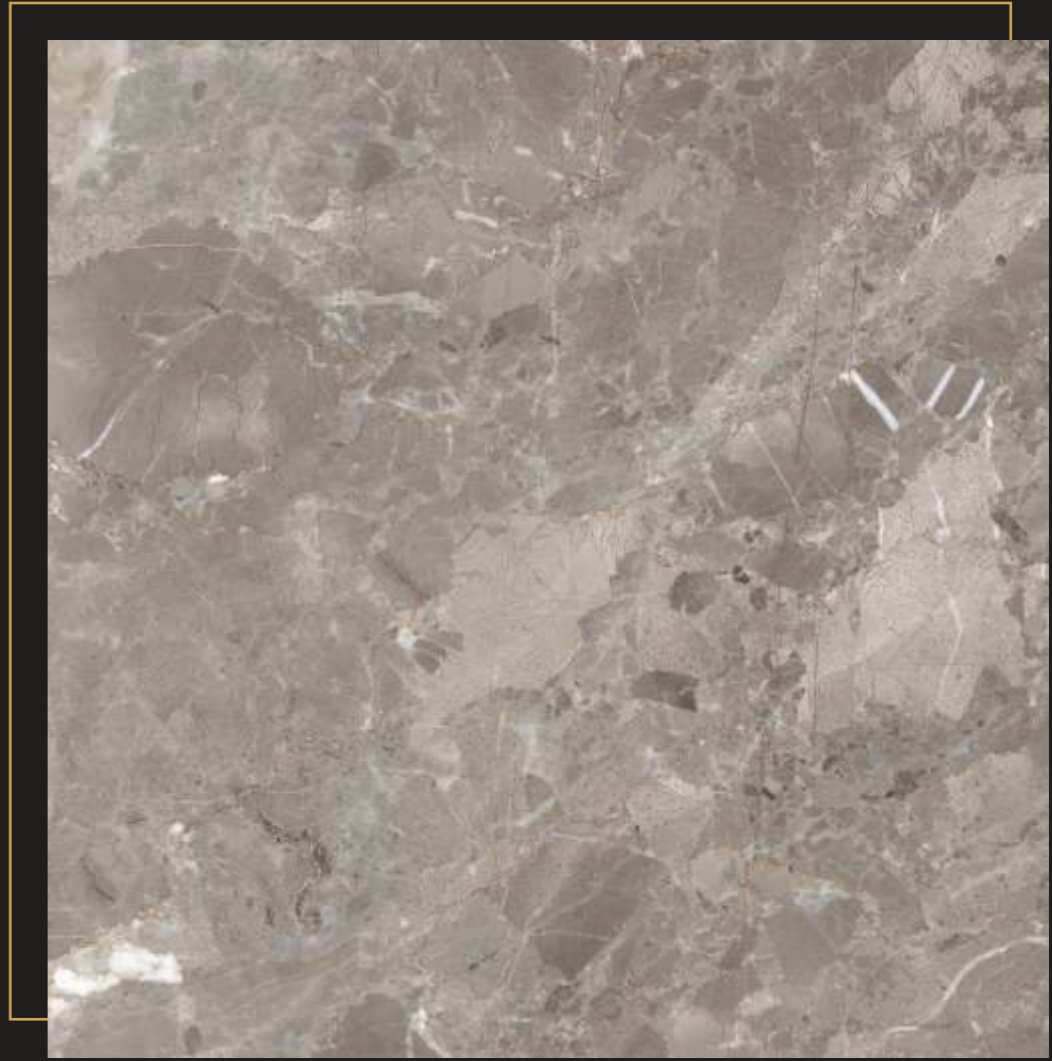




STEP INTO A WORLD
OF ELEGANCE AND INNOVATION



About Company

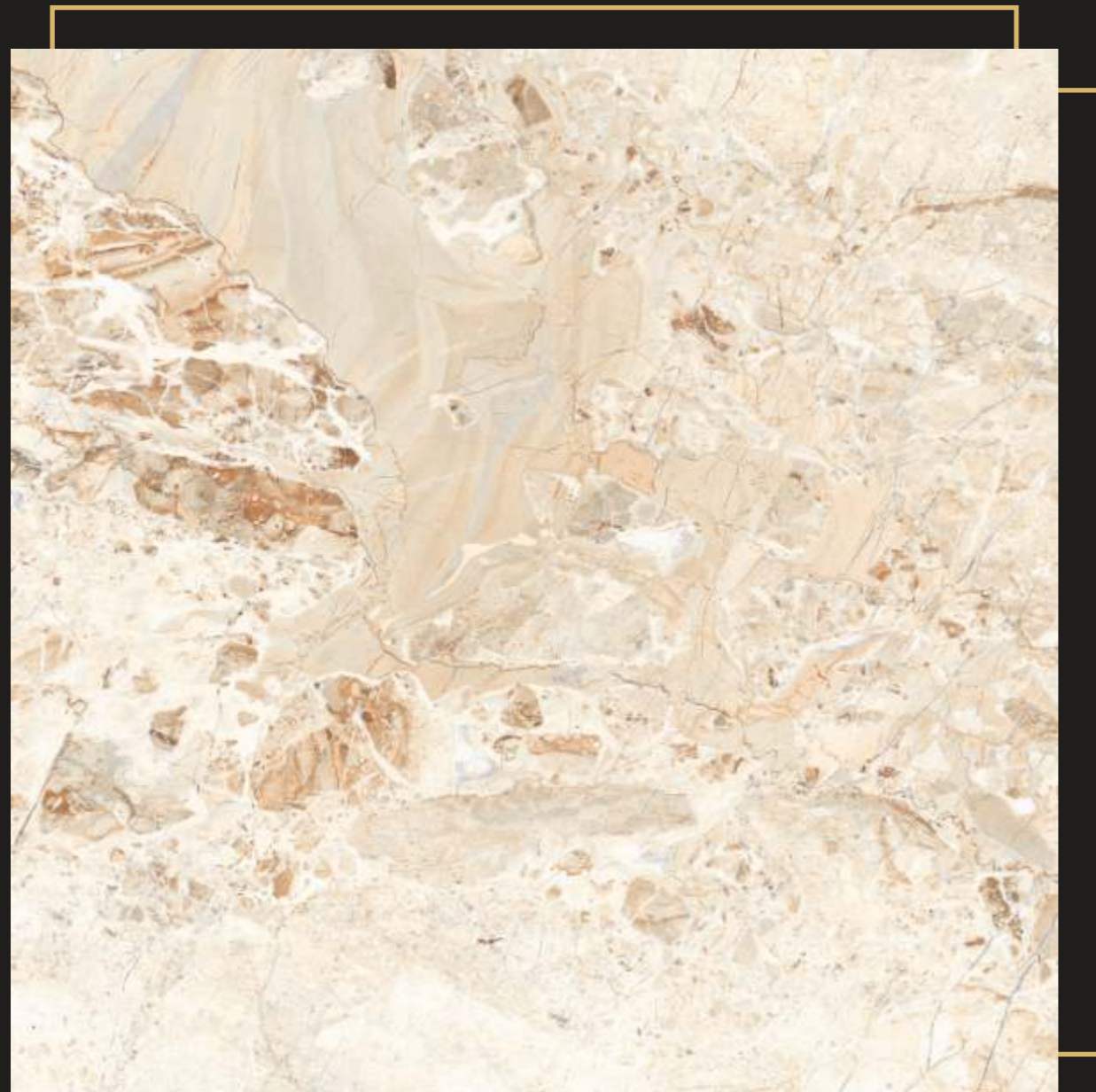
Keramica is a startup that focuses in giving superior services to our clients. We have made it our goal to disrupt the tiles trend and set a new trend with innovation and experience. Keramica is the destination for must have tiles that are new, trendy, leading in the market and everything in between. We are here to revolutionise the import business with aggressive management. With our esteemed founders and an excellent team, we are ready to welcome everyone of you to be a part of this amazing journey that has just begun.

Vision

Keramica endeavours to be the industry leader by providing trendsetting cutting-edge designs of unparalleled beauty and refinement, uncompromising quality, technologically superior products and dependable services to its clients. We will continue to assert ourselves as the supplier of choice in all our product categories, by anticipating and delivering inspiring and advanced solutions to the needs of an ever evolving market.

Innovation

Keramica endeavours to be the industry leader by providing trendsetting cutting-edge designs of unparalleled beauty and refinement, uncompromising quality, technologically superior products and dependable services to its clients. We will continue to assert ourselves as the supplier of choice in all our product categories, by anticipating and delivering inspiring and advanced solutions to the needs of an ever evolving market.



TILES FINISH



TILES FINISH



TILES FINISH



TILES FINISH



TILES FINISH





800X800MM

Captivating elegance in every step: discover the timeless allure of our 800x800mm Glossy finish tiles, adding a touch of brilliance and sophistication to any space.



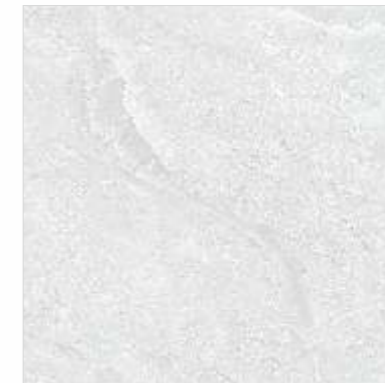
FLOOR : CT8080/378

**technical
detail**

size : 800x800mm
thickness : 9mm
body : color
series : eslab
finish : glossy

CT8080/377

random : 6



CT8080/378

random : 4



CT8080/379

random : 6



CT8080/380

random : 4



CT8080/381

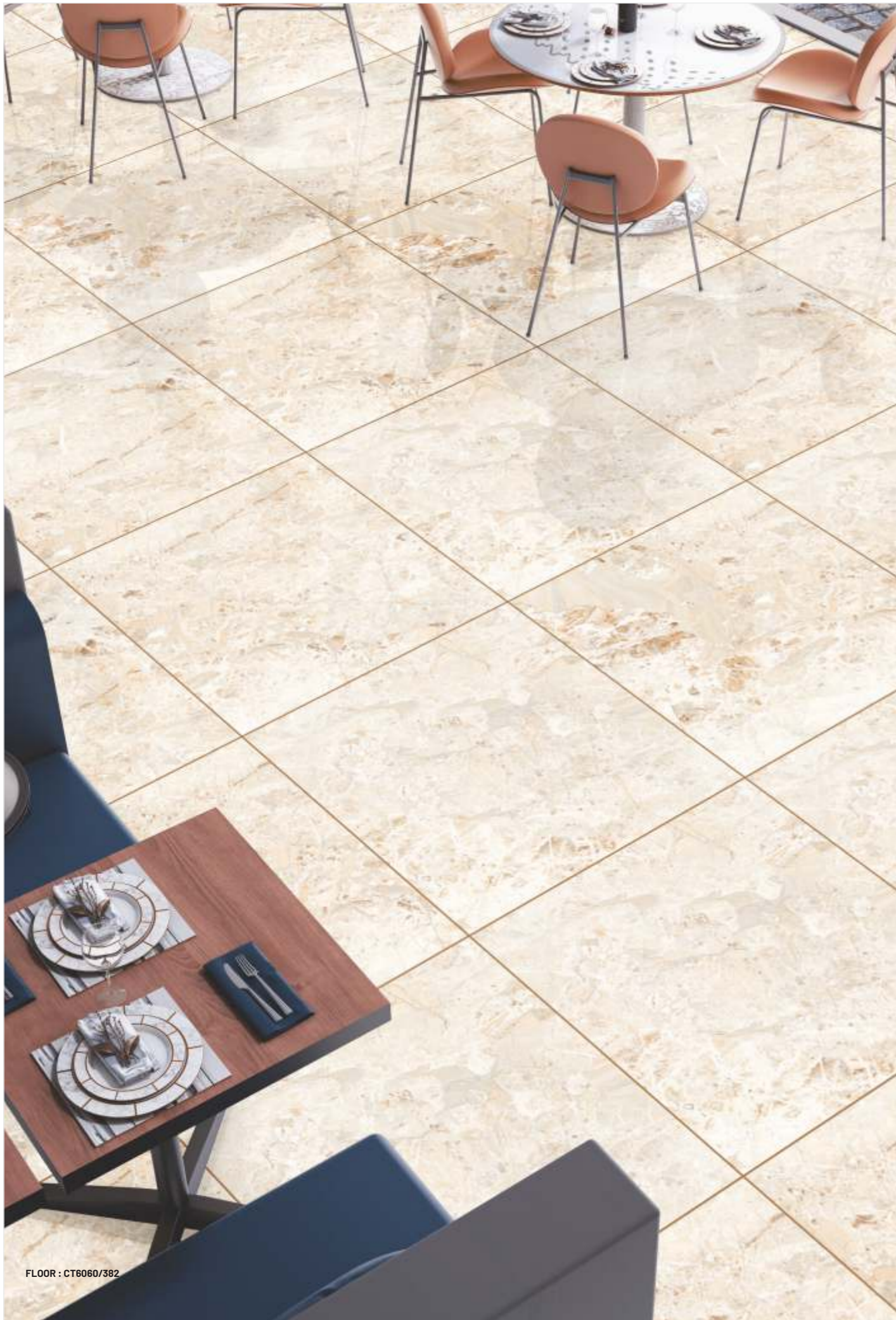
random : 4





600X600MM

Endless Design Possibilities: Transform your space with our exquisite 600x600mm glossy finish tiles, boasting a stunning array of captivating designs to suit every style and taste.



FLOOR : CT6060/382



**technical
detail**

size : 600x600mm
 thickness : 9mm
 body : color
 series : eslab
 finish : glossy

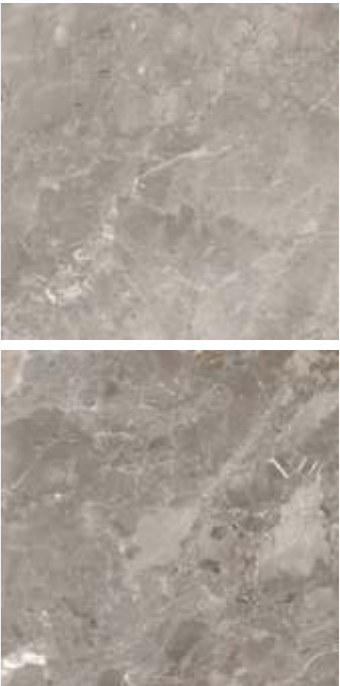
CT6060/382

random : 2



CT6060/383

random : 2



CT6060/384

random : 2



CT6060/386

random : 2



CT6060/387

random : 2





FLOOR : CT6060/389



**technical
detail**

size : 600x600mm
thickness : 9mm
body : color
series : eslab
finish : glossy

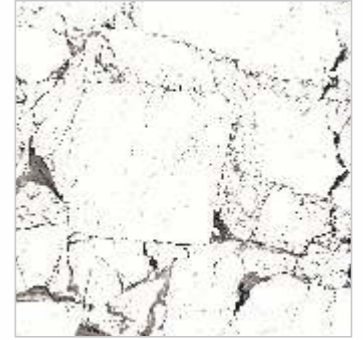
CT6060/388

random : 2



CT6060/389

random : 2



CT6060/390

random : 2



CT6060/391

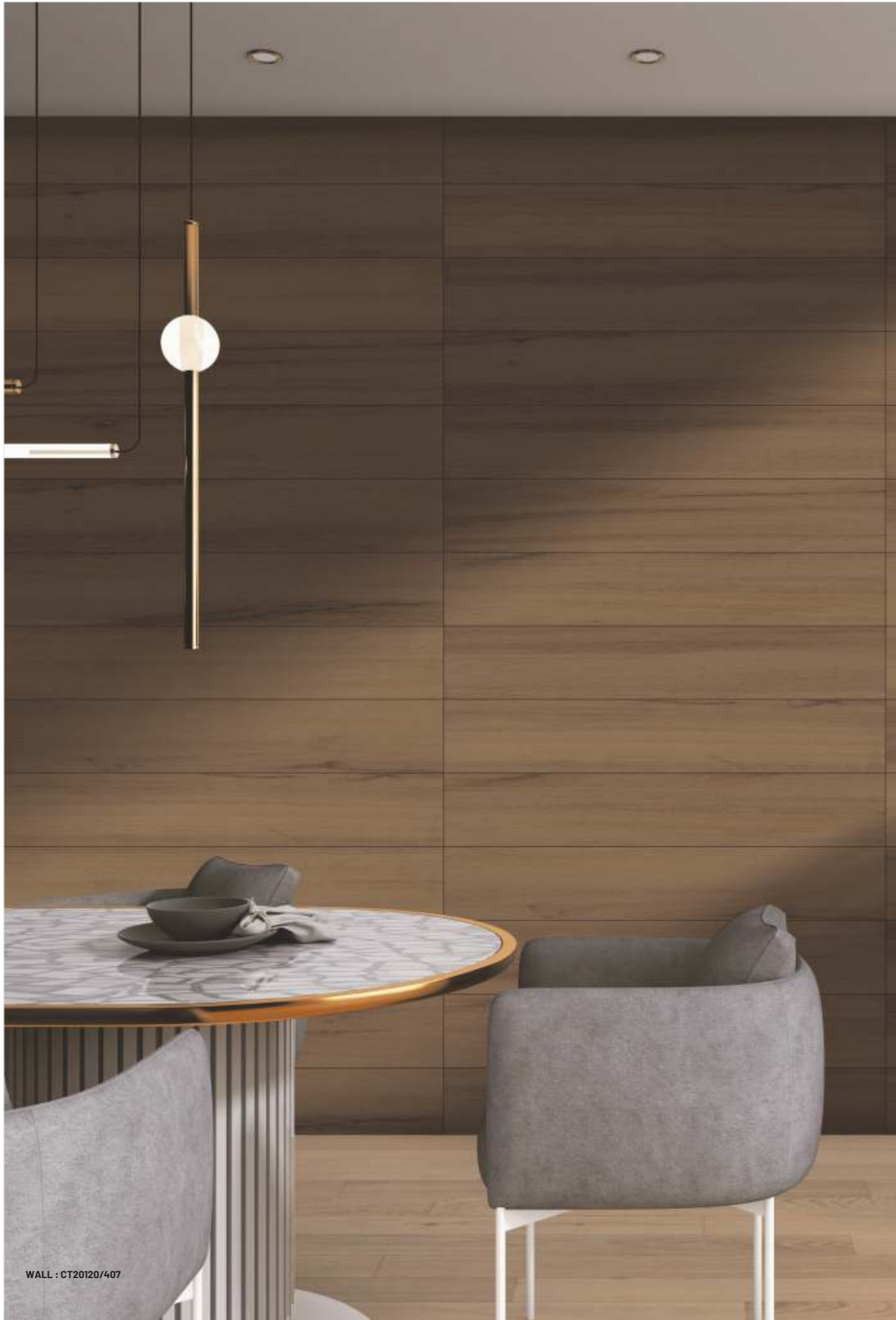
random : 2





200X1200MM

Embrace Nature's Warmth Indoors: Experience the inviting charm of our 200x1200mm wooden-inspired tiles, featuring a soothing matt finish that beautifully replicates the essence of nature



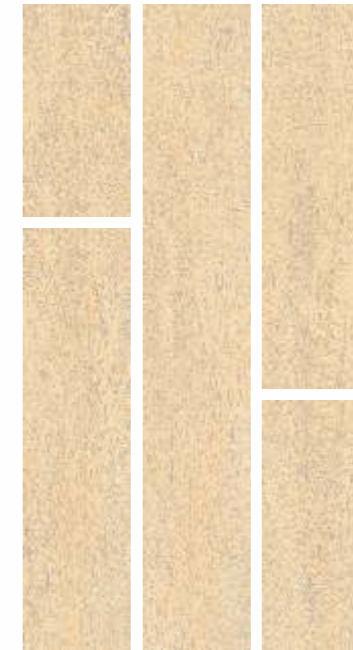
WALL : CT20120/407

**technical
detail**

size : 200x1200mm
 thickness : 9mm
 body : color
 series : eslab
 finish : MATT

CT20120/406

random : 12



CT20120/407

random : 13



CT20120/408

random : 6



CT20120/409

random : 4



CT20120/410

random : 6





wall : CT20120/414

**technical
detail**

size : 200x1200mm
 thickness : 9mm
 body : color
 series : eslab
 finish : MATT

CT20120/411

random : 8



CT20120/412

random : 4



CT20120/413

random : 10



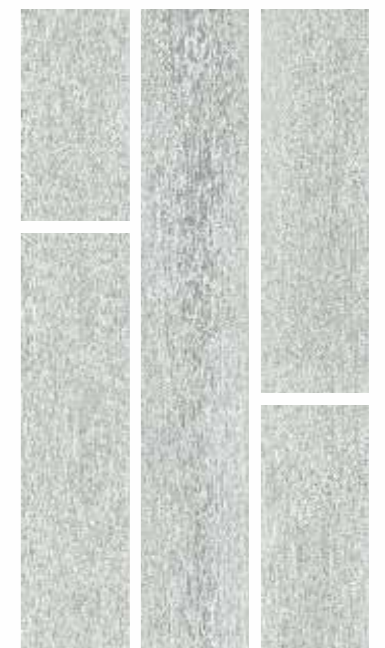
CT20120/414

random : 4



CT20120/415

random : 10





FLOOR : CT20120/418

**technical
detail**

size : 200x1200mm
 thickness : 9mm
 body : color
 series : eslab
 finish : MATT

CT20120/416

random : 6



CT20120/417

random : 6



CT20120/418

random : 4



CT20120/419

random : 9



CT20120/420

random : 4



APPLICATIONS

Construction Industry:

Floor and wall coverings, partition and storage walls, false ceilings, surface finishes and restoration, insulated panels, tunnels and undergrounds.

Facade cladding systems:

Ventilated facades, coatings, external claddings.

Interior design:

Surfaces of kitchen and bathroom tops, cupboards, tables, desks, doors and furnishings in general.

Composite and structural panels:

The slabs can be placed on top of each other or over other materials to create extremely light and particularly resistant composite and structural panels suitable in all those cases that require high resistance and reduced weight load on the surface.

Facade cladding systems:

Ventilated facades, coatings, external claddings.

Interior design:

Surfaces of kitchen and bathroom tops, cupboards, tables, desks, doors and furnishings in general.

Composite and structural panels:

The slabs can be placed on top of each other or over other materials to create extremely light and particularly resistant composite and structural panels suitable in all those cases that require high resistance and reduced weight load on the surface.

SALIENT FEATURES



Quality raw materials



No alteration in colour



Non-absorbent



Versatile for any project



Resistant to heavy loads



Resistant to liquids and acids



Resistant to thermal shock



Resistant to frost



Resistant to scratches and abrasions



Non-toxic slabs that do not release micro-particles



Surface suitable for contact with foodstuffs



Easy to clean



Hygienic surface

VIVID APPLICATIONS



Garden & Pools



Residences



Hotels



Offices



Restaurants



Shops



Malls



Airports



Railway Stations



Bathrooms



Interiors



Kitchens



Public Spaces

INSTALLATION PROCESS

LAYING (FLOORS)

In addition to the technical and aesthetic qualities of the material, in order to be a complete success floor also requires elements such as a foundation, an adhesive layer and expansion joints, which together comprise a real flooring system. A perfect end result is only guaranteed if the laying operations are performed correctly.

The floor should preferably be laid using adhesives, following the instructions provided by the adhesive manufacturers. For tiles measuring over 60x60 cm for floors subject to intensive use, a double layer system is advisable. For decorative tiles with precious material inserts, it is advisable to consult the instructions on the packaging. To make the most of the material characteristics, we recommend following these instructions during the laying process:

- Lay out a few pieces on the floor to check the overall effect. Lay material from several different boxes at once.
- Do not immerse the material in water before laying. If using the traditional laying system, tap the material until all the cavities and air bubbles have completely disappeared from the mortar and until liquid cement comes up through the spaces between the tiles. In the case of polished surfaces in particular, do not use pencils or pens to mark out cuts on the top of the tiles to be laid.

Wait 48-72 hours before subjecting the floor to everyday use.

INSTALLATION (WALL TILING)

Before starting the installation, it is recommended to check that the substrate is sufficiently cured, flat, mechanically resistant, without crumbling parts and grease, oils, paints and waxes (perfectly clean).

Choose the most suitable adhesive considering the following factors:

- type of substrate;
- type and size of the tiles;
- weather conditions at the installation;
- time available for the ceramic tiling to be ready for use.

It is recommended to follow the instruction of the best manufacturers of adhesives for the installation of ceramic tiles.

- Prepare the necessary material.
- Prepare the adhesive following the instructions of the manufacturer.
- Apply the adhesive on the substrate using a suitably toothed squeegee.

It is important to use a proper grout even according to the end use of the ceramic tiling, following the instructions of the best manufacturers of joint sealants. For a correct and easy removal of the grout follow the indications of its manufacturer (previously checking its suitability).

WARNING : it is advisable to check the availability of the entire quantity of material required on site at the installation to allow the installer to mix the modules from several boxes for getting a pleasant effect. The check of the shades must be made before starting the installation.

GROUTING AND FINAL CLEANING

When using normal drying adhesives, grout the floor after 24-48 hours; when using rapid drying adhesives, grout after 4 hours. When working with polished materials in particular, use cement grouts of a matching tone, avoiding dark coloured grouts with pale materials, and vice versa. When grouting these surfaces, it is advisable not to use flexible mortars made from synthetic materials, especially if the colour contrasts that of the material, and not to use grout additives/latex. In fact, these products make it extremely difficult to remove any residue using normal cleaning products. If using grouts with contrasting or special pigments, take care to follow the information provided in the specifications and test the grout on the material beforehand. Use a rubber-coated spatula to apply the grout over the entire surface of the material. Grout small areas at a time, removing excess quantities with damp sponges or cloths (using clean water only) or specific equipment for removing excess grout, while the layer of grout is still damp. Adequate initial cleaning is fundamental to get the best shine and to ensure cleanability and easy everyday maintenance. Initial cleaning should therefore be performed immediately after laying, using acid-based products, scrubbing hard and rinsing with plenty of water. This will make it possible to remove any grout, adhesive and cement residue, etc. You may use any detergent available on the market, with the sole exception of products containing hydrofluoric acid (compounds and derivatives) as provided for by standard EN 14411. We recommend protecting the laid flooring carefully. When carrying out other operations such as painting, plumbing or any other work, we recommend covering the floor with PVC sheets, airballs or fabrics once it has been laid.

GENERAL ADVICE FOR GROUTING

Pay attention while choosing joint sealants: check the technical sheets, choose them shade-matched and follow carefully the recommended cleaning times, as many new generation coloured sealants contain pigments and additives that can be very strong.

CARE AND MAINTENANCE

These are so-called final cleaning operations; this is the most important step, as it influences the results of the subsequent use of the product. Its purpose is to remove any trace or residue of foreign matter from the surface of the slabs. If you have used a cement based sealant during installation, once the grout has dried, Emcer recommends out the following operations;

- Remove any coarse dirt using a vacuum cleaner;
- Wet the floor with clean water in order to soak and protect the joints against the corrosive action of the detergent;
- Clean using suitable acid detergent, which can be applied by hand (with a clean cloth) or with a machine (a single-brush machine with medium, non-abrasive bristles or a high-pressure water cleaner);
- Soak up the cleaning solution with a clean cloth or a suitable vacuum cleaner;
- Thoroughly rinse surfaces with clean, warm water to neutralise the action of the detergent;
- Remove any build-up by scraping it off;
- If needed, clean the surface again with the single-brush machine, using a diluted neutral or alkaline detergent, then rinse using clean warm water and dry.
- If any epoxy sealant has been used during installation of the product, given the chemical nature of such product, any remaining residue on the porcelain tile's surface should be removed before the grout has hardened completely and carefully follow the instructions supplied by the manufacturer.

SLAB CARE AND MAINTENANCE

These are the so-called final cleaning operations: this is the most important step, as it influences the results of the subsequent use of the product. Its purpose is to remove any trace or residue of foreign matter from the surface of the slabs. If you have used a cement-based sealant during installation, once the grout has dried, Keramica recommends carrying out the following operations:

- Remove any coarse dirt using a vacuum cleaner;
- Wet the floor with clean water in order to soak and protect the joints against the corrosive action of the detergent;
- Clean using a suitable acid detergent, which can be applied by hand (with a clean cloth) or with a machine (a single-brush machine with medium, non-abrasive bristles or a high-pressure water cleaner);
- Soak up the cleaning solution with a clean cloth or a suitable vacuum cleaner;
- Thoroughly rinse surfaces with clean, warm water to neutralise the action of the detergent;
- Remove any build-up by scraping it off;
- If needed, clean the surface again with the single-brush machine, using a diluted neutral or alkaline detergent, then rinse using clean warm water and dry.
- If an epoxy sealant has been used during installation of the product, given the chemical nature of such product, any remaining residue on the porcelain tile's surface should be removed before the grout has hardened completely and carefully follow the instructions supplied by the manufacturer.



Technical Specification

CHARACTERISTIC	STANDARD AS PER ISO-13006/EN 14411 GROUP BIa	MEAN VALUE OF EMCER POLISHED GVT	MEAN VALUE OF EMCER RUSTIC GVT	TEST METHOD
REGULATORY PROPERTIES				
Deviation in length & width	±0.5 %	±0.1 %	±0.1 %	ISO-10545-2
Deviation in thickness	±5.0 %	±4.0 %	±4.0 %	ISO-10545-2
Straightness in side	±0.5 %	±0.1 %	±0.1 %	ISO-10545-2
Rectangularity	±0.5 %	±0.1 %	±0.1 %	ISO-10545-2
Surface flatness	±0.5 %	±0.2 %	±0.2 %	ISO-10545-2
Color difference	Unaltered	No change	No change	ISO-10545-16
Glossiness	As per mfg	Min 90%	Min 4%	GLOSSOMETER
STRUCTURAL PROPERTIES				
Water absorption	< 0.50 %	< 0.20 %	< 0.20 %	ISO-10545-3
Apparent density	> 2.0 g/cc	>2.10 g/cc	>2.10 g/cc	DIN 51082
MASSIVE MECHANICAL PROPERTIES				
Modulus of rupture	Min. 35 N/mm ²	Min. 40 N/mm ²	Min. 40 N/mm ²	ISO-10545-4
Breaking strength	Min. 1300 N	Min. 2000 N	Min. 2000 N	ISO-10545-4
Impact resistance	As per mfg.	Min. 0.55	Min. 0.55	ISO-10545-5
SURFACE MECHANICAL PROPERTIES				
Surface abrasion resistance	As per mfg.	Min. Class-3	Min. Class-4	ISO-10545-7
MOH's hardness	As per mfg.	Min. 4	Min. 5	EN 101
THERMO HYGROMETRIC PROPERTIES				
Frost resistance	No damage	No damage	No damage	ISO-10545-12
Thermal shock resistance	No damage	No damage	No damage	ISO-10545-9
Moisture expansion	Nil	Nil	Nil	ISO-10545-10
Thermal expansion (COE)	Max. 9.0 x 10 ⁻⁶	Max. 6.5x10 ⁻⁶	Max. 6.5 x 10 ⁻⁶	ISO-10545-8
Crazing resistance	As per mfg.	Min. 10 Cycle	Min. 10 Cycle	ISO-10545-11
CHEMICAL PROPERTIES				
Chemical resistance	No damage	No damage	No damage	ISO-10545-13
Stain resistance	Resistant	Resistant	Resistant	ISO-10545-14
SAFETY PROPERTIES				
Slip resistance	As per mfg.	>0.40	>0.40	ISO-10545-17
Fire resistance	As per mfg.	Fire proof	Fire proof	N. A.
Lead & Cadmium given off by glazed tiles	As per mfg.	Does not yield Pb & Cd	Does not yield Pb & Cd	ISO-10545-15

Packing Detail

SIZE (in mm)	THICKNESS APPROX	PIECES / PER BOX	COVERAGE AREA IN SQ.MTR.	BOX WEIGHT (APPROX.)
600X600MM	9MM	4	1.44	30 KGS.
800X800MM	9MM	3	1.91	37 KGS.
200X1200MM	9MM	5	1.19	28 KGS.